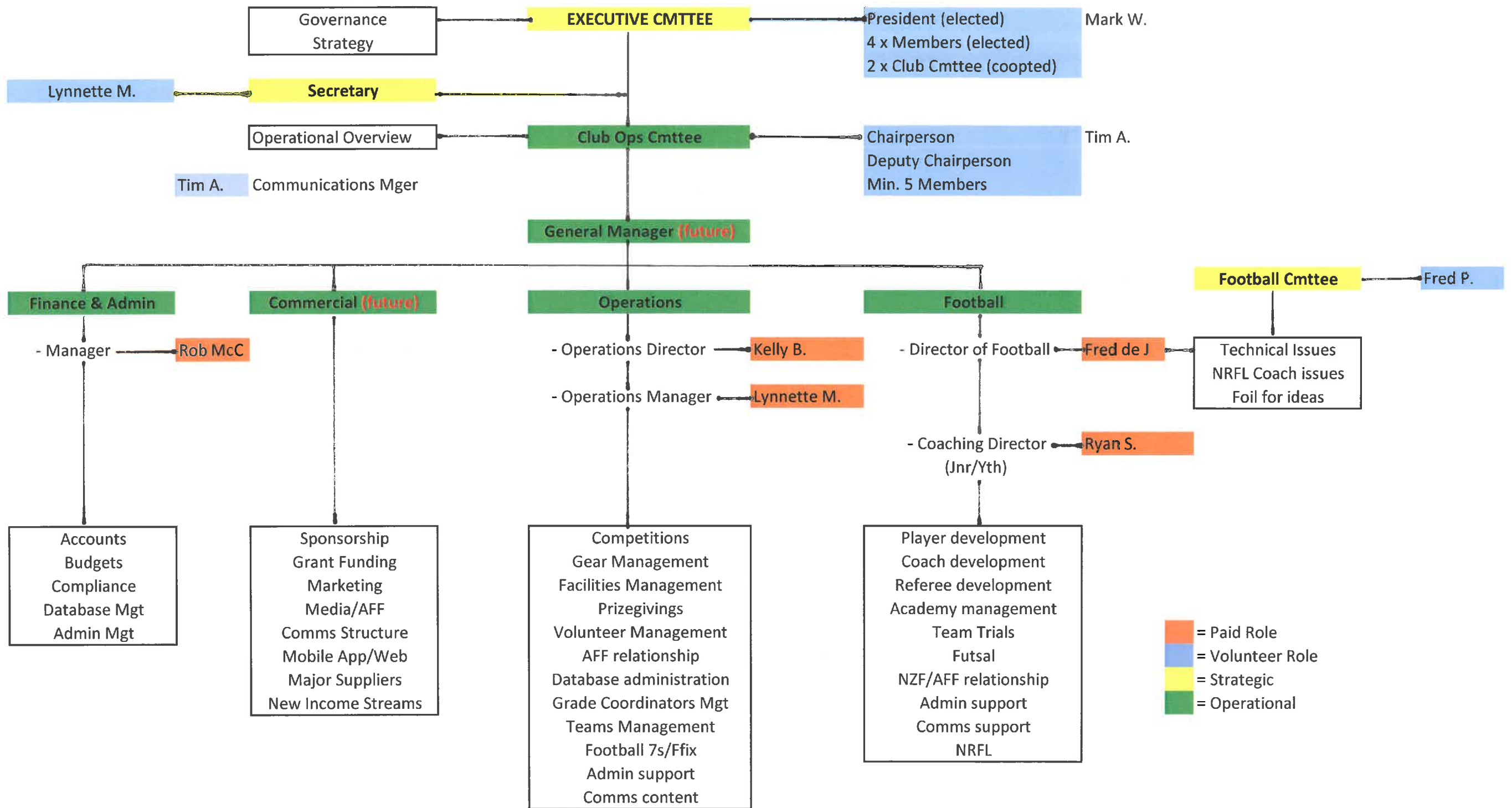


## ORGANIZATIONAL RESTRUCTURE Ellerslie AFC Inc.



■ = Paid Role  
■ = Volunteer Role  
■ = Strategic  
■ = Operational

- Notes :
1. Club Cmttee made up of min. 5 persons / internal vote for Chair & Deputy Chair/Right of Veto by Exec Cmttee
  2. Club Cmttee nominates 2 persons onto Exec. Cmttee, one of which must be the Chair.
  3. Quorum for Club Cmttee to be min. of 60% of people (to be rounded up) on Cmttee at any one time.
  4. The roles of the respective Committees are elaborated on in the attached Memorandum